

THE FEDERAL BUREAU OF ENFORCEMENT

A Division of the Federal Digital Systems Administration

Modernizing Violent Crime Investigation Through Federal Technology
and Investigative Coordination

Prepared by

Xavier Lampkin

Technology Founder and Software Engineer

Republican Candidate for President, 2028

FEC C00939371 | Salt Lake County, Utah

xavier@lampkin2028.com | lampkin2028.com

ASSIST

Local law
enforcement

COORDINATE

Federal
resources

MODERNIZE

Crime
technology

SOLVE

Violent
crime

CONTENTS

1. THE PROBLEM

Why Local Police Departments Are Failing to Solve Violent Crime

2. THE FEDERAL BUREAU OF ENFORCEMENT

Mission, Structure, and Role Within the FDSA

3. CORE FUNCTIONS

National Crime Data Platform

Federal Investigative Coordination

Forensic Lab Network

Rapid Response Teams

4. TECHNOLOGY INFRASTRUCTURE

FDSA-Built Systems Powering the FBE

5. RELATIONSHIP WITH EXISTING AGENCIES

How the FBE Complements, Not Duplicates

6. RELATIONSHIP WITH LOCAL LAW ENFORCEMENT

Voluntary Participation, Local Authority Preserved

7. FUNDING MODEL

Congressional Appropriations + FDSA Savings

8. EXPECTED OUTCOMES

Measurable Impact on Violent Crime

9. SOURCES

Federal Data Citations

THE PROBLEM

Violent crime in America is not primarily a federal problem. It is a local problem that local police departments are increasingly unable to solve. The national homicide clearance rate -- the percentage of reported murders that result in an arrest -- has declined from approximately 90% in the 1960s to roughly 50% today. In some major cities, it is below 40%. That means more than half of all murders in America go unsolved.

The reasons are systemic. Small and mid-sized police departments lack forensic laboratories. Rural departments lack digital evidence processing capabilities. Detectives in understaffed departments carry caseloads that make thorough investigation impossible. Crimes that cross city or state lines create jurisdictional barriers that slow investigations. And the technology infrastructure connecting local, state, and federal agencies is fragmented, outdated, and often incompatible.

Metric	Current Reality
National homicide clearance rate	~50% (down from ~90% in the 1960s)
Homicide clearance in major cities	Below 40% in many metro areas
Local PDs without forensic labs	The vast majority of the ~18,000 U.S. law enforcement agencies
Average detective caseload	Far exceeds recommended standards in understaffed departments
Cross-jurisdictional data sharing	Fragmented, incompatible systems across agencies
Forensic evidence backlog	DNA and ballistic backlogs measured in months to years

Table 1.1: Violent Crime Investigation Gaps.

The federal government has the forensic capabilities, the intelligence networks, and the investigative expertise to help. But accessing those resources from a local department is bureaucratically complex, slow, and often impractical for cases that don't meet the narrow criteria of existing federal agencies. The result: thousands of violent crimes go unsolved every year -- not because the evidence doesn't exist, but because the local department processing it doesn't have the tools.

"Half of all murders in America go unsolved. That is not a policing failure. It is a systems failure."

THE FEDERAL BUREAU OF ENFORCEMENT

2.1 Mission

The Federal Bureau of Enforcement (FBE) is an investigative support division within the Federal Digital Systems Administration (FDSA). Its mission is to strengthen the ability of state and local law enforcement agencies to solve violent crimes by providing direct access to federal investigative coordination, advanced forensic capabilities, and modern technology infrastructure.

The FBE is not designed to replace or duplicate the role of local police departments or existing federal law enforcement agencies. It serves as a federal coordination and investigative support layer that enables local law enforcement to quickly access federal resources when investigating serious violent crimes.

- Assist local and state law enforcement in investigating violent crimes
- Provide rapid access to federal investigative resources and intelligence networks
- Operate a national technology platform enabling real-time collaboration between local and federal investigators
- Provide advanced forensic services to departments that lack sufficient resources
- Improve national violent crime clearance rates through coordination, technology, and federal investigative support

2.2 Role Within the FDSA

The FBE operates within the FDSA's Law Enforcement Technology Division. The FDSA is responsible for building and maintaining all technology infrastructure used by the FBE -- including national investigative data systems, forensic analysis tools, and secure communication platforms. The FBE is responsible for operating and managing the investigative support services that run on top of this infrastructure.

This structure combines the FDSA's advanced engineering capabilities with the FBE's investigative coordination mission. The FDSA builds the systems. The FBE uses them to help local police solve violent crimes.

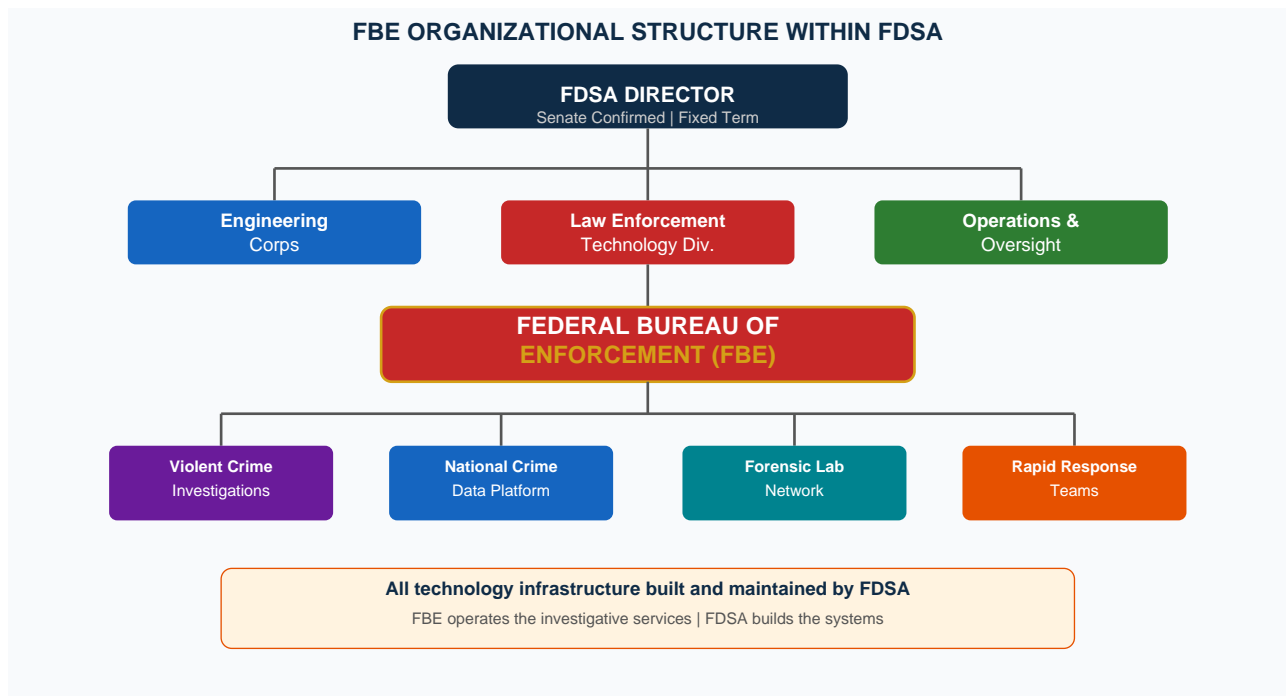


Figure 2.1: FBE Organizational Structure Within the FDSA.

2.3 What the FBE Is NOT

- The FBE does not conduct routine policing or patrol activities in any city
- The FBE does not replace local police departments or take over local cases
- The FBE does not duplicate the FBI's counterterrorism or counterintelligence missions
- The FBE does not duplicate the DEA's drug enforcement mission
- The FBE does not operate outside of requests from local authorities or federal authorization
- Participation by local departments is entirely voluntary

CORE FUNCTIONS

3.1 National Violent Crime Collaboration Platform

The FDSA will develop a national investigative platform that allows law enforcement agencies to securely share case information, submit evidence, and collaborate across jurisdictions. This system enables local detectives to communicate directly with federal investigative specialists and access federal resources without unnecessary bureaucratic barriers.

- Secure case file sharing between local, state, and federal agencies
- Digital evidence submission for federal forensic analysis
- Real-time investigative collaboration tools
- Cross-jurisdictional suspect and ballistic matching
- National violent crime pattern analysis and trend identification
- Encrypted communications meeting federal security standards

A detective in a small town in Mississippi could submit ballistic evidence digitally and receive federal analysis -- the same quality available to NYPD or LAPD -- without making 15 phone calls and waiting six months. That is the gap this platform closes.

3.2 Federal Investigative Coordination

FBE agents serve as the federal point of contact responsible for coordinating resources across federal agencies and assisting local investigators in advancing complex cases. When a local department encounters a violent crime that involves interstate activity, organized criminal networks, or evidence requiring federal-level analysis, the FBE coordinates the response.

Agency	Existing Mission	FBE Coordination Role
FBI	Counterterrorism, counterintelligence, major federal crimes	FBE coordinates FBI resources when local violent crime cases involve interstate elements
U.S. Marshals	Fugitive apprehension, court security	FBE coordinates fugitive tracking for violent crime suspects across jurisdictions
ATF	Firearms trafficking, explosives	FBE coordinates ballistic matching and firearms tracing through the national platform
DEA	Drug enforcement	FBE coordinates when violent crime is connected to drug trafficking networks

Table 3.1: FBE Coordination With Existing Federal Agencies.

3.3 National Forensic Support Network

The FBE will operate a network of advanced forensic laboratories capable of assisting local departments with evidence analysis. Most of the approximately 18,000 law enforcement agencies in the United States do not operate their own forensic labs. They rely on state labs that are backlogged, underfunded, and slow. The FBE forensic network provides a federal alternative.

- DNA analysis and matching
- Ballistic evidence comparison across the national database
- Digital evidence processing -- phones, computers, surveillance footage
- Forensic imaging and crime scene reconstruction
- Advanced analytical support for complex cases

Local departments submit evidence through the FDSA-built digital portal. The FBE forensic network processes it and returns results. The goal is to provide every police department in America -- regardless of size or budget -- access to world-class forensic capabilities.

3.4 Rapid Response Investigative Teams

When requested by state or local authorities, the FBE may deploy specialized investigative teams to assist with complex violent crime cases or cities experiencing sudden spikes in violence. These teams serve as temporary federal reinforcements, not permanent occupying forces.

- Homicide investigators with federal-level experience
- Forensic specialists for on-site evidence processing
- Intelligence analysts for pattern identification and network mapping
- Digital evidence experts for technology-intensive cases

Deployment occurs only upon request from local authorities or through federal authorization. Teams work alongside local detectives, not in place of them. When the case is resolved or the surge subsides, the team withdraws. Local authority is preserved at every stage.

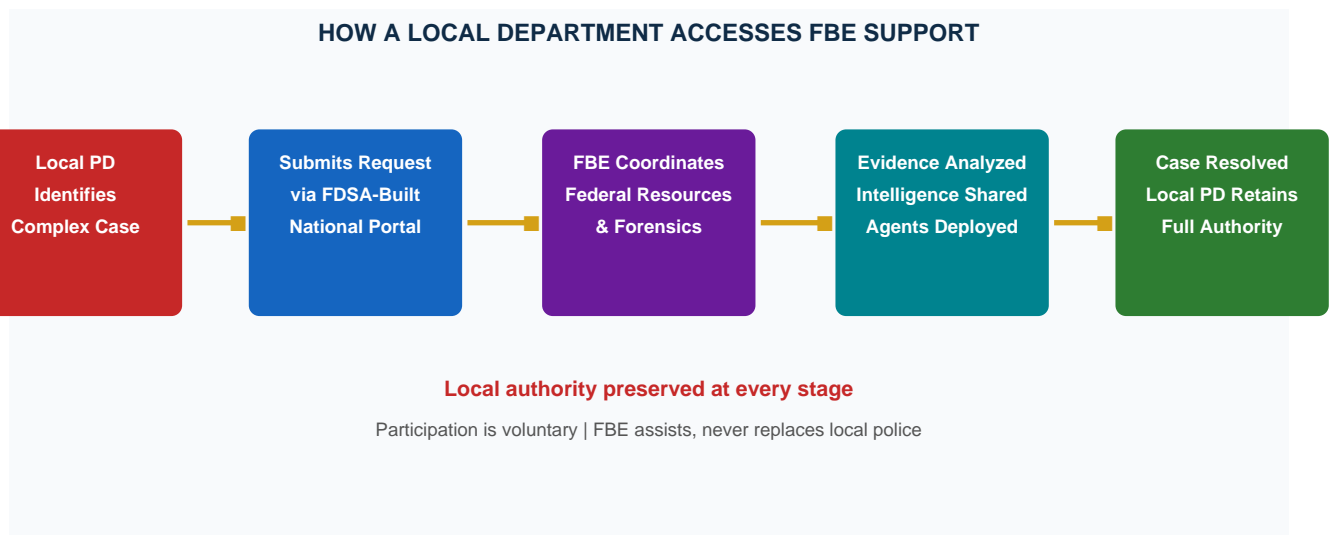


Figure 3.1: How a Local Department Accesses FBE Support.

TECHNOLOGY INFRASTRUCTURE

The technology differentiator is what separates the FBE from simply hiring more federal agents. The FDSA builds the systems. The FBE operates them. This is a technology-first approach to violent crime investigation.

System	What It Does	Who Uses It
National Crime Data Platform	Shared platform for uploading evidence, sharing ballistic data, analyzing crime patterns, matching suspects across jurisdictions	All participating local, state, and federal agencies
Real-Time Investigation Collaboration	Secure encrypted channels enabling local detectives, federal investigators, and forensic labs to coordinate in real time	Detectives and investigators on active cases
Evidence Submission Portal	Digital portal for local PDs to submit evidence for federal forensic analysis without physical transfer delays	Any participating local department
Forensic Analysis Tools	AI-assisted DNA matching, ballistic comparison, digital evidence analysis, and pattern recognition	FBE forensic lab network
National Intelligence Dashboard	Centralized violent crime trend analysis, interstate criminal network tracking, and predictive pattern identification	FBE intelligence analysts and authorized agencies

Table 4.1: FDSA-Built Technology Systems Supporting the FBE.

Every system is built with zero-trust security architecture, federal encryption standards, and strict access controls. No system collects data on citizens who are not subjects of active criminal investigations. Privacy protections are architectural, not policy-based -- they are built into the code.

RELATIONSHIP WITH EXISTING AGENCIES

The most important question any policy analyst will ask: why not just fund the FBI better?

The answer is structural. The FBI's primary missions are counterterrorism, counterintelligence, and major federal crimes. Violent crime assistance to local departments is a secondary function that competes for resources with national security priorities. The ATF focuses on firearms trafficking and explosives. The Marshals focus on fugitives and court security. The DEA focuses on drug enforcement.

None of these agencies exist primarily to help a local detective in Baton Rouge solve a homicide. None of them operate a technology platform designed for local departments to submit evidence and receive federal forensic analysis. None of them are structured as an investigative support service that local departments can access on demand.

The FBE fills that gap. It is not a competitor to existing agencies. It is a connector between them and the 18,000 local departments that need their help but currently cannot access it efficiently.

	FBI	ATF	FBE
Primary Mission	Counterterrorism, counterintelligence, major federal crimes	Firearms trafficking, explosives, arson	Violent crime investigative support for local law enforcement
Local PD Access	Limited, case must meet federal criteria	Limited to firearms-specific cases	Open platform, voluntary participation, any violent crime
Technology Platform	Internal FBI systems	NIBIN ballistic database	National open-access platform built by FDSA for all agencies
Forensic Access	FBI lab (federal cases only)	ATF lab (firearms cases)	National forensic network open to any participating local PD

Table 5.1: FBE vs. Existing Federal Agencies — Complementary, Not Duplicative.

RELATIONSHIP WITH LOCAL LAW ENFORCEMENT

Participation in the FBE system is entirely voluntary for state and local agencies. No department is required to use it. No department surrenders jurisdiction by using it. Local law enforcement agencies maintain full authority over their cases at all times.

The FBE is designed so that every police department in the United States -- regardless of size, budget, or geographic location -- has access to federal-level investigative support when confronting violent crime. A department of 15 officers in rural Arkansas gets the same forensic analysis capabilities as the Chicago Police Department. That is the equity the FBE creates.

Principles of Local Partnership

- Local departments request FBE assistance -- the FBE does not impose it
- Local detectives lead investigations with FBE support, not the reverse
- All arrests, prosecutions, and case dispositions remain under local or state authority unless federal charges are warranted
- FBE agents serve as consultants and coordinators, not supervisors
- FBE rapid response teams deploy and withdraw based on local authority decisions
- The national platform is a tool local departments choose to use, not a mandate

"The goal is to ensure that every police department in the United States -- regardless of size or resources -- has access to federal-level investigative support when confronting violent crime."

FUNDING MODEL

The Federal Bureau of Enforcement is funded through two sources:

7.1 Congressional Appropriations

Initial funding comes through congressional appropriations within the existing federal law enforcement budget. The estimated pilot-phase budget is \$2-3 billion annually, covering personnel, forensic laboratories, investigative technology, task force operations, and training programs. This is not new spending in the macro sense -- it is a reallocation of federal law enforcement priorities toward violent crime assistance.

7.2 FDSA Efficiency Savings

As the FDSA reduces federal IT contractor spending, a portion of verified savings is redirected to expand FBE capabilities:

- Expand the national forensic lab network to additional regions
- Scale the rapid response investigative teams
- Upgrade and maintain the national crime data platform
- Fund advanced forensic technology development

The technology infrastructure itself -- the national platform, the evidence portal, the collaboration tools -- is built by FDSA engineers as part of the agency's core mission. This means the FBE gets world-class technology at a fraction of what it would cost through traditional government IT procurement.

Component	Funding Source	Estimated Annual Cost
Personnel (agents, analysts, forensic scientists)	Congressional appropriations	\$1.2-1.8 billion
Forensic laboratory network	Appropriations + FDSA savings	\$300-500 million
Technology infrastructure	FDSA (built in-house)	Included in FDSA budget
Task force operations	Congressional appropriations	\$200-400 million
Training programs	Congressional appropriations	\$100-200 million
Total estimated		\$2-3 billion/year

Table 7.1: FBE Funding Breakdown.

EXPECTED OUTCOMES

The Federal Bureau of Enforcement is designed to produce measurable improvements in violent crime investigation across the United States:

- **Increase national homicide clearance rates** -- by providing forensic and investigative resources to departments that currently lack them, more cases get solved
- **Accelerate investigations** -- digital evidence submission and real-time federal collaboration eliminate weeks of bureaucratic delay
- **Enhance forensic capabilities nationwide** -- every department in America gets access to federal-quality DNA, ballistic, and digital forensic analysis
- **Strengthen cross-jurisdictional coordination** -- the national platform breaks down the data silos that allow criminals to operate across city and state lines
- **Reduce violent crime through increased investigative capacity** -- when criminals know that every department has federal backing, the deterrent effect is real
- **Close the resource gap between large and small departments** -- a rural sheriff's office gets the same forensic capabilities as NYPD

The ultimate metric is simple: more violent crimes solved, faster, with better evidence. If the clearance rate moves from 50% to 65% nationally, that represents thousands of additional murderers, armed robbers, and violent offenders brought to justice every year.

The Federal Bureau of Enforcement represents a technology-first approach to the violent crime crisis. It does not militarize local police. It does not federalize local investigations. It provides the tools, the forensic capabilities, and the coordination infrastructure that local departments need to do the job they were hired to do -- protect their communities.

"Half of all murders in America go unsolved. Not because the evidence doesn't exist. Because the department processing it doesn't have the tools. The FBE changes that."

SOURCES

- FBI Uniform Crime Report. National homicide clearance rate data. ucr.fbi.gov
- Bureau of Justice Statistics. Law Enforcement Management and Administrative Statistics (LEMAS). bjs.ojp.gov
- National Institute of Justice. Forensic science research and development. nij.ojp.gov
- Federal IT Dashboard. FY2025 federal IT spending. itdashboard.gov
- Government Accountability Office. Federal legacy IT systems reports. gao.gov
- Department of Justice. Bureau of Justice Assistance — Law enforcement coordination programs. bj.a.ojp.gov

Xavier Lampkin

xavier@lampkin2028.com | lampkin2028.com | (385) 352-5368

FEC Committee ID: C00939371 | Candidate ID: P80009020